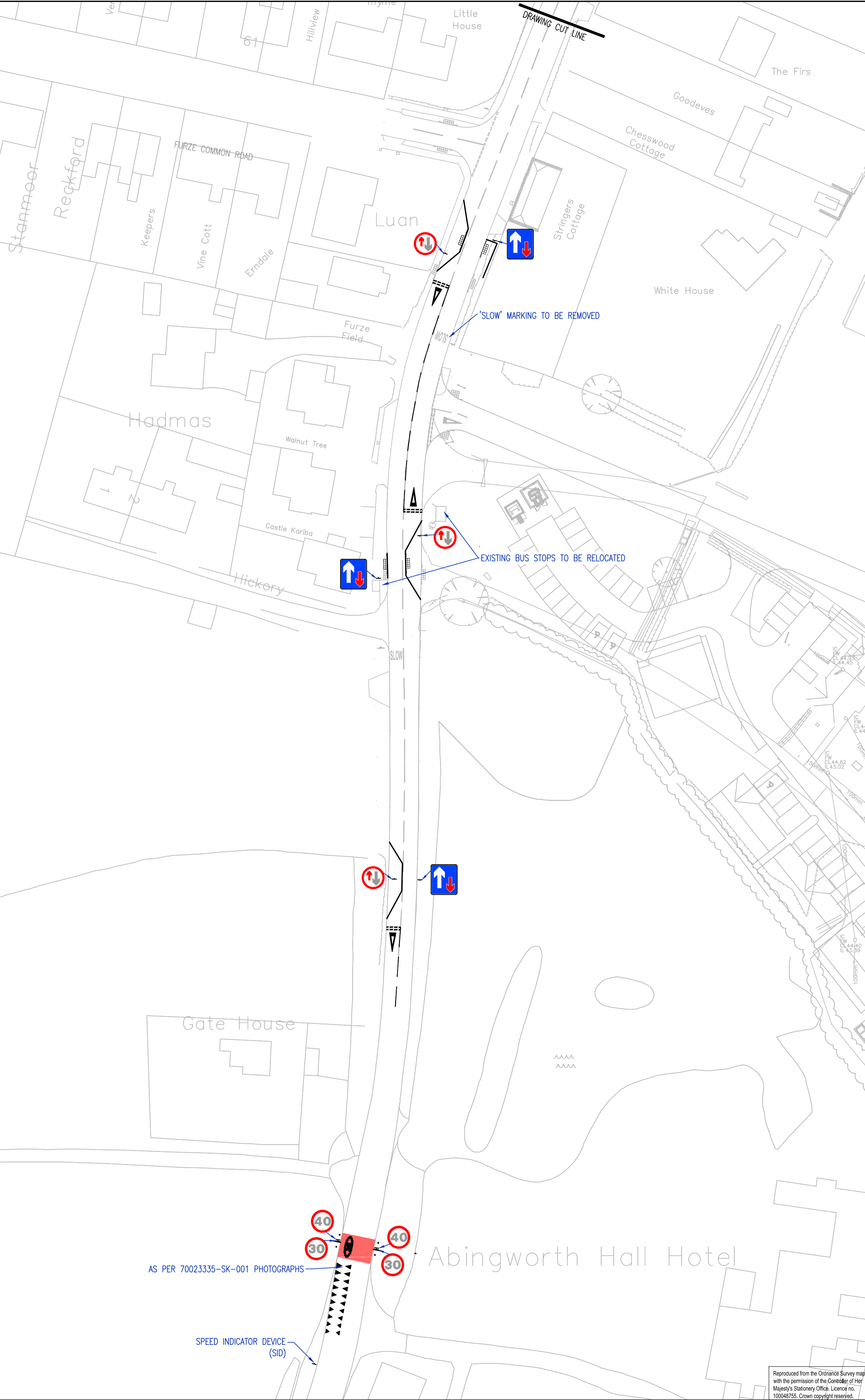
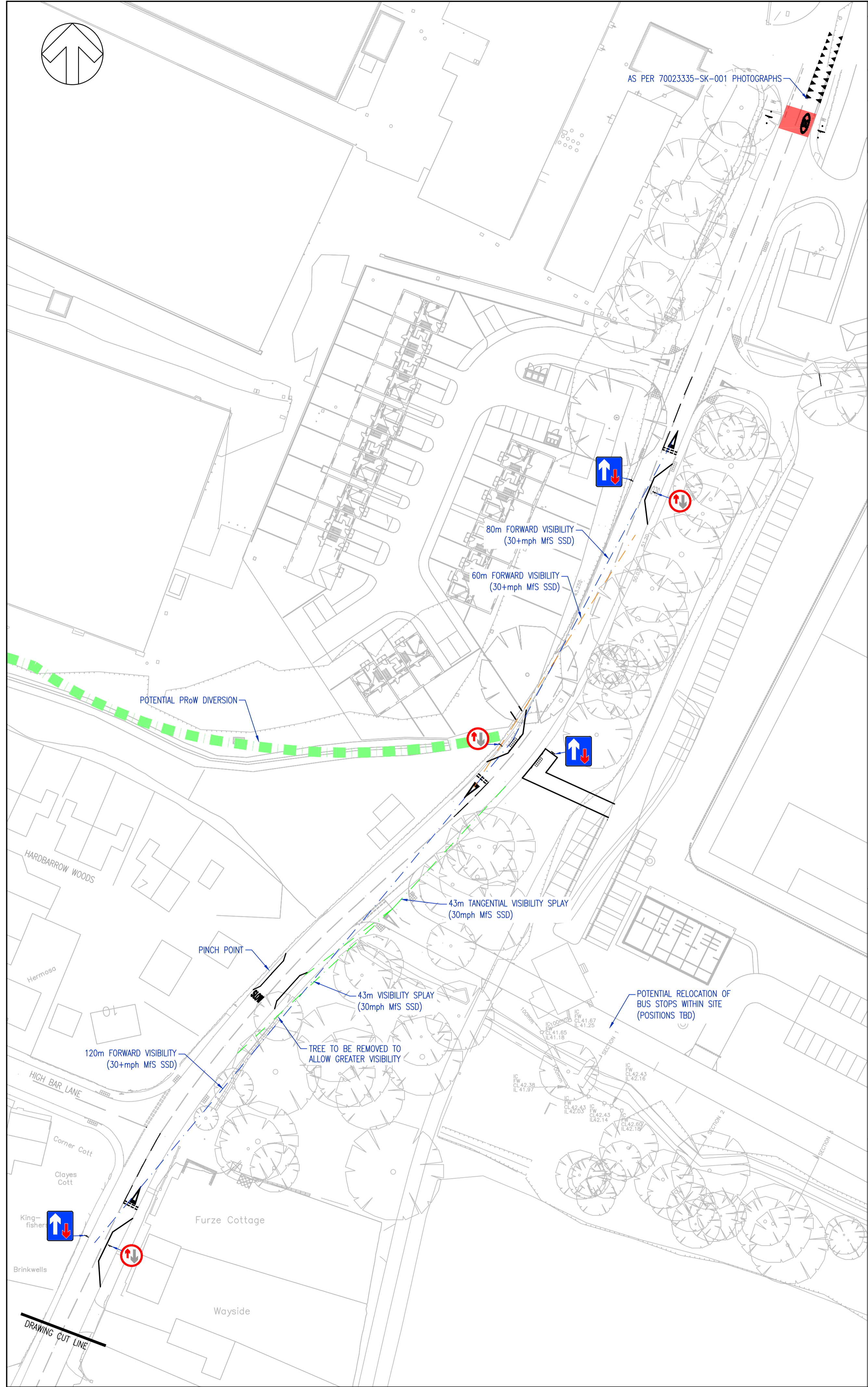


DO NOT SCALE

NOTE:  
 1. THIS CONCEPT DRAWING IS PRODUCED WITHIN THE SCOPE OF OUR CLIENT BRIEF, UNDER THE CDM REGULATIONS, BASED ON THE INFORMATION AVAILABLE TO THE DESIGNER AT THE DATE BELOW. NO RESIDUAL RISKS HAVE BEEN IDENTIFIED. SHOULD THIS CONCEPT DRAWING ADVANCE TO THE PRELIMINARY DESIGN STAGE, THE DESIGNER WILL BE RESPONSIBLE FOR ENSURING THAT ADEQUATE INFORMATION IS ACQUIRED TO UNDERTAKE A MORE THOROUGH ASSESSMENT IN ACCORDANCE WITH THE REGULATIONS.  
 2. FOOTWAYS AS PER SECTION 27B SCHEME PROVIDED BY OXFORD HOMES



REV	DATE	BY	DESCRIPTION	CHK	APP
C	25/01/17	HL	MINOR AMENDMENTS	IF	A.JL
B	01/12/16	NW	LABELS AMENDED	A.JL	A.JL
A	07/11/16	LEW	FIRST ISSUE	GS	A.JL

DRAWING STATUS: FOR INFORMATION ONLY

**WSP** | **PARSONS BRINCKERHOFF**  
 Mountbatten House, Basing View, Basingstoke, Hampshire RG21 4JH  
 Tel: +44 (0)1256 318800 Fax: +44 (0)1256 318700  
 www.wspgroup.com www.pbworld.com

CLIENT: ABINGWORTH DEVELOPMENTS LTD

ARCHITECT:

PROJECT: ABINGWORTH NURSERIES

TITLE: POTENTIAL TRAFFIC CALMING MEASURES PHASE 2

SCALE @ A1:	1:500	CHECKED:	GS	APPROVED:	A.JL
CAD FILE:	70023335-SK-002	DESIGN/DRAWN:	NW	DATE:	December 2016
PROJECT No:	70023335	DRAWING No:	70023335-SK-002	REV:	C

Reproduced from the Ordnance Survey map with the permission of the Controller of Her Majesty's Stationery Office. Licence no. 100048755. Crown copyright reserved.

\\UK.WSPGROUP.COM\CENTRAL DATA\PROJECTS\70023335\70023335 - ABINGWORTH NURSERIES\E MODELS AND DRAWINGS\DEVELOPMENT\AUTOCAD\SKETCHES\70023335-SK-002.DWG 25/01/2017 16:21:41 Lyster, Hollam